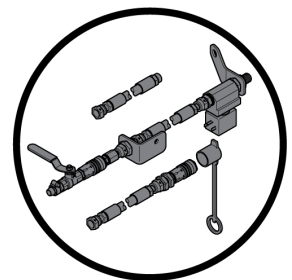


 **Husqvarna**



**Accessory Assembly Instruction**  
**Dust Reduction**

**DXR 250 | 270 | 275 | 300 | 305 | 310 | 315**



**HUSQVARNA CONSTRUCTION PRODUCTS**

Husqvarna part no.  
114 29 04-26 Rev. B



<b>1</b>	<b>Dust Reduction</b>	<b>1</b>
1.1	Ingoing Parts .....	1
1.2	Installation DXR 250/270/300/310 .....	2
1.3	Installation DXR 275/305/315 .....	6

---

# 1 DUST REDUCTION

## 1.1 Ingoing Parts

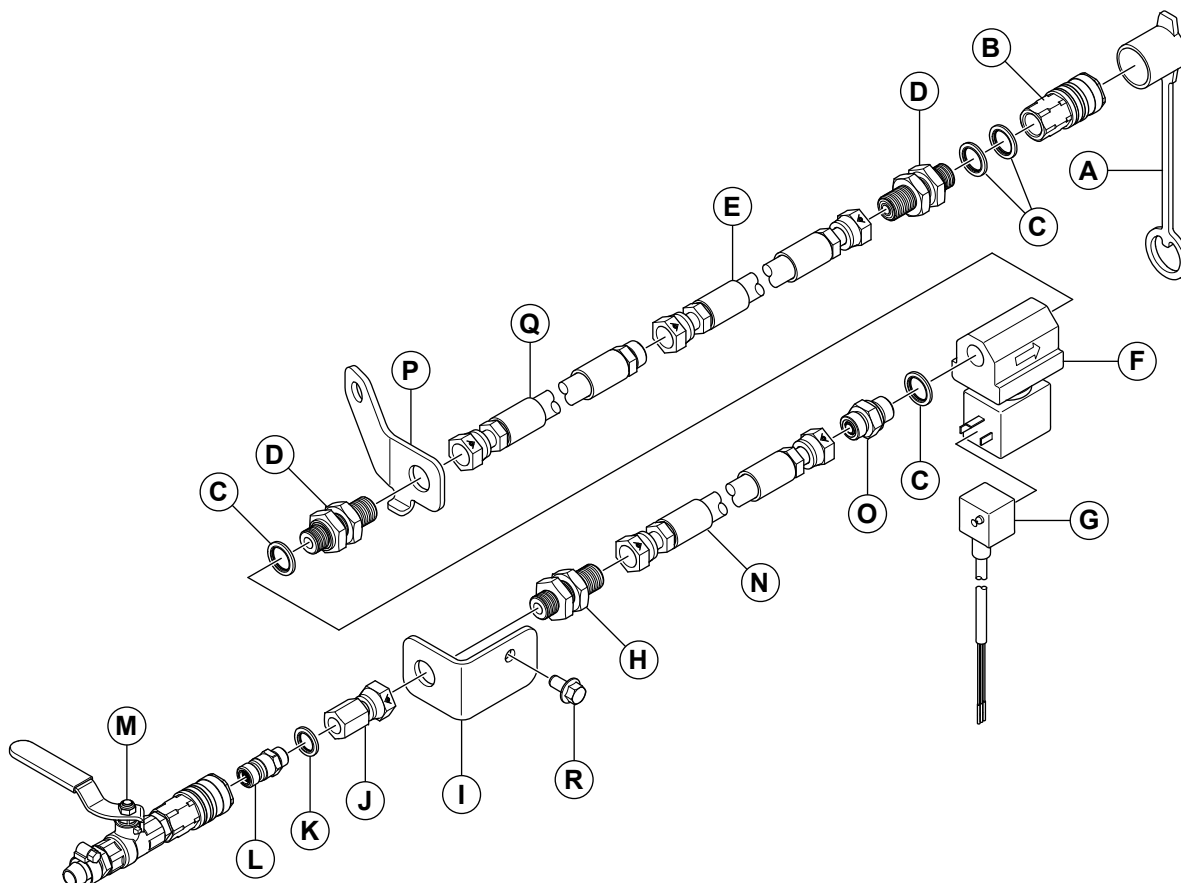


Table 1. Ingoing Parts in Dust Reduction Kit 536 11 20-02 for DXR250/270/275, 536 11 20-03 for DXR300/305, 536 11 20-04 for DXR310/315

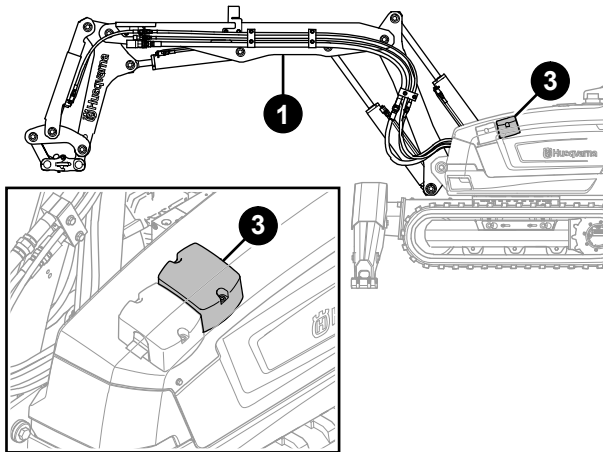
Pcs	Part	Name	Variants
1	A	Dust cover	
1	B	Hydraulic coupling	
4	C	Washer 3/8"	
2	D	Adapter	
1	E	Hose assy	DXR250 & DXR270/275 = 1715 mm DXR300/305 = 2100 mm DXR310/315 = 2425 mm
1	F	Valve, water control	
1	G	Cable with round pin	DXR250/270/300/310
1	G	Cable with square pin	DXR275/305/315
1	H	Adapter	
1	I	Bracket, water connection rear	
1	J	Adapter	
1	K	Washer 1/4"	
1	L	Nipple	
1	M	Valve assy	
1	N	Hose assy, L = 1100 mm	
1	O	Adatper	
1	P	Bracket, water valve	
1	Q	Hose assy, L = 875 mm	
1	R	Screw with flange head M8x16	DXR275/305/315

# 1 DUST REDUCTION

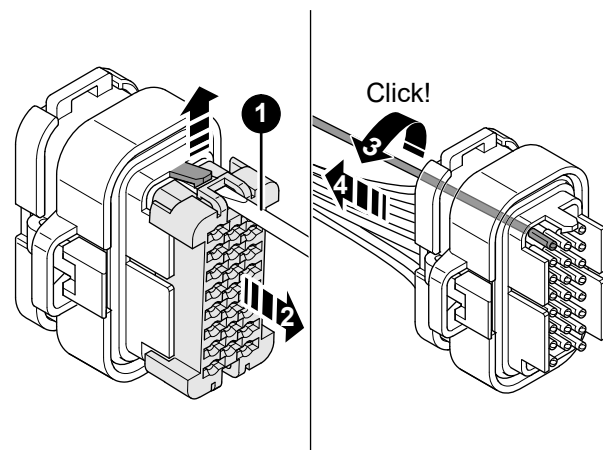
## 1.2 Installation DXR 250/270/300/310

To position the machine in a safe way before start of maintenance is important to prevent accidents. Always take precautions to reduce the risk of heavy pieces collapsing or tipping due to lack of hydraulic pressure. Make sure that the machine is positioned in such a way that the machine cannot tip and that the Boom-stick is mechanically locked or forming a stable self-carrying structure. Use jack stands to secure the machine and to stop hydraulic parts to sink due to reduced pressure.

### Install DXR 250/270/300/310



1. Position the machine as illustrated (1).
2. Turn off the machine.
3. Remove the Slave Control Module (K23) cover (3).



4. Disconnect the connectors XM2 and XM3 from the Slave Control Module (K23).



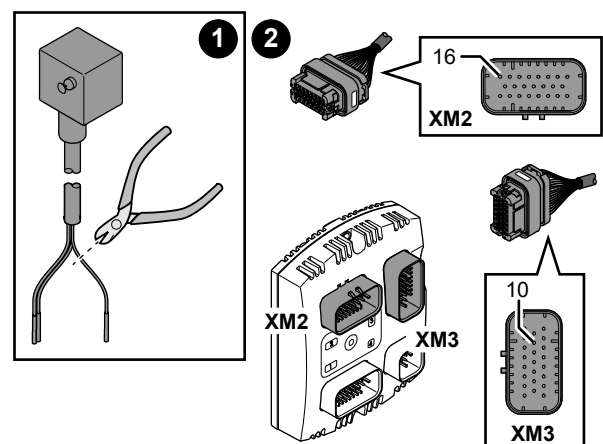
#### NOTE!

If the machine is an older version you have to move the current wire in connector XM2 slot 16 to connector XM1 slot 23.

Remove of a wire:

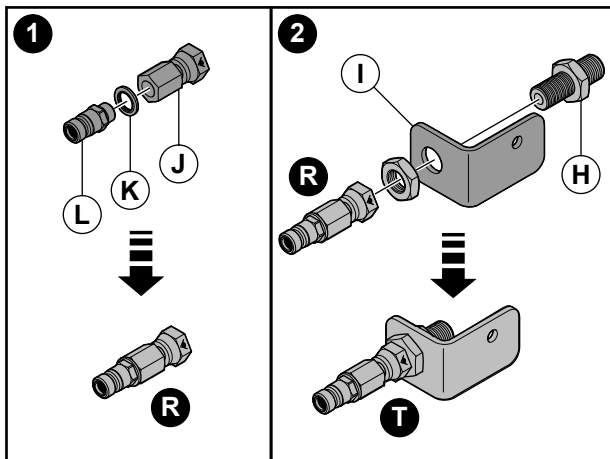
- Release the tab lock (1) on the side of the connector grid and slide the grid (2) to the next stop.
- Disengage the cable pin by gently twisting the wire (3) until a quiet click is heard.
- Pull out the cable (4) from the connector house.

Install of a wire: Refer to paragraph 6 for instructions.



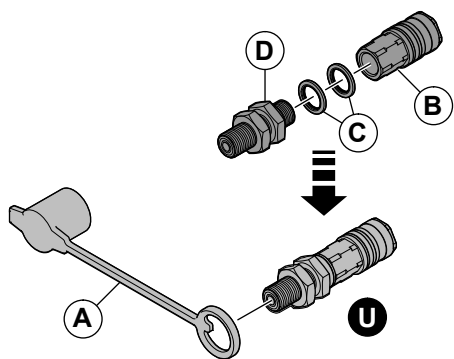
5. Cut the black wire (1).
6. Install the blue wire in XM2 connector slot 16, and the brown wire in XM3 connector slot 10 in component K23 (Slave Control Module) (2).
  - Push in the cable pin into the connector house until a quiet click is heard.
  - Push back the grid protector properly, the tab lock must be locked in position.

# 1 DUST REDUCTION



7. Pre assemble J + K + L = R tightly.

8. Pre assemble R + I + H = T tightly.



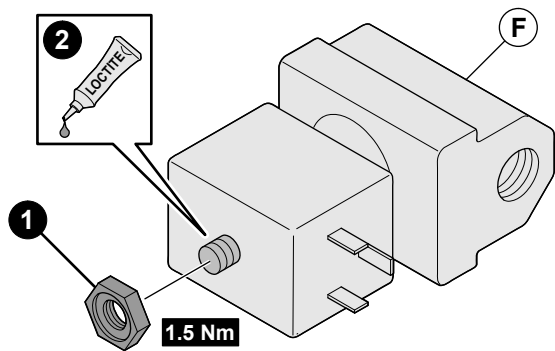
9. Pre assemble B + 2 x C + D = U tightly.

10. Pre assemble U + A.

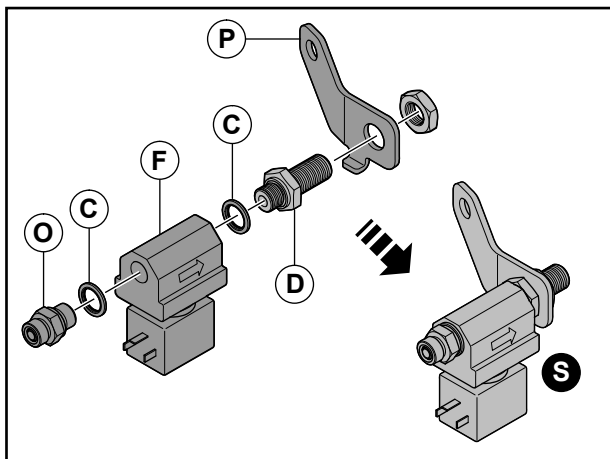
11. Remove the pre assembled nut (1) from part F.

12. Add LOCTITE 243 on the valve threads (2).

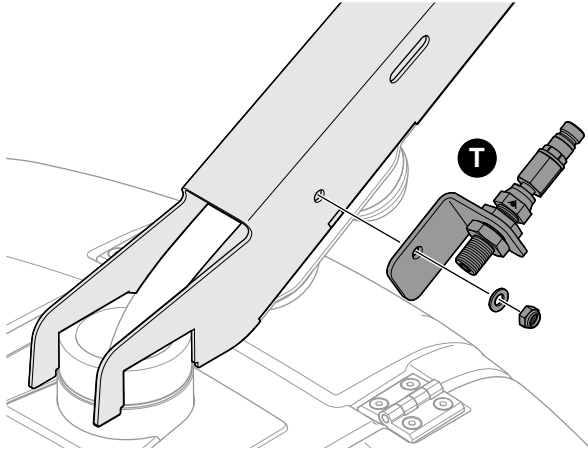
13. Tighten the nut (1) with torque 1.5 Nm



14. Pre assemble P + D + C + F + C + O = S tightly.

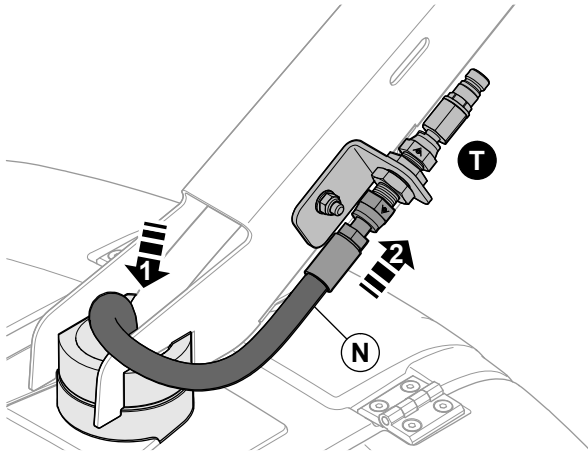


# 1 DUST REDUCTION



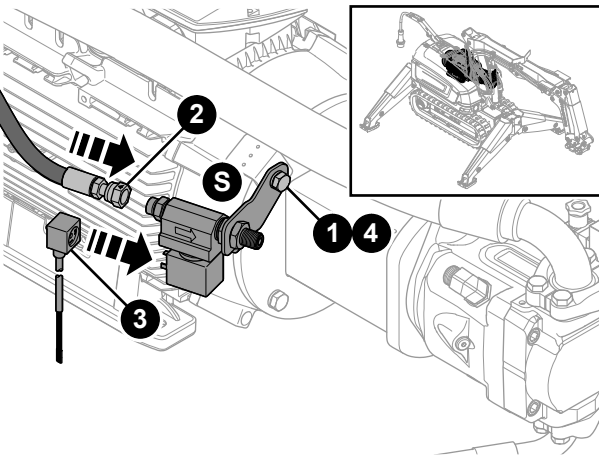
15. Remove the nut.

16. Install the pre assembled part T with the nut tightly.



17. Install the hose N.

18. Connect the hose to the pre assembled part T.

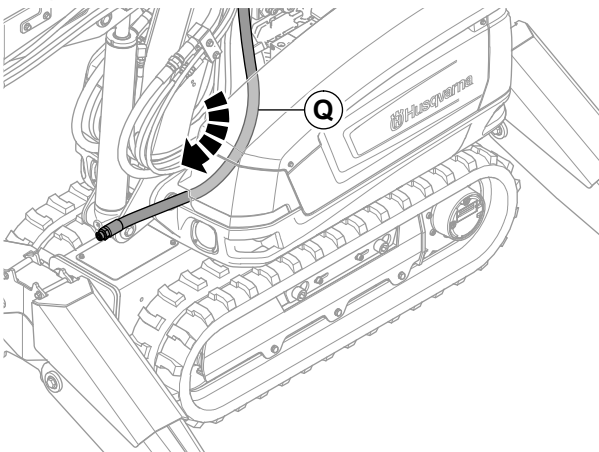


19. Loosen the bolt (1).

20. Install the hose N to the pre assembled part S (2).

21. Connect the connector to the valve (3) and secure the cable with a strap to the existing wiring harness.

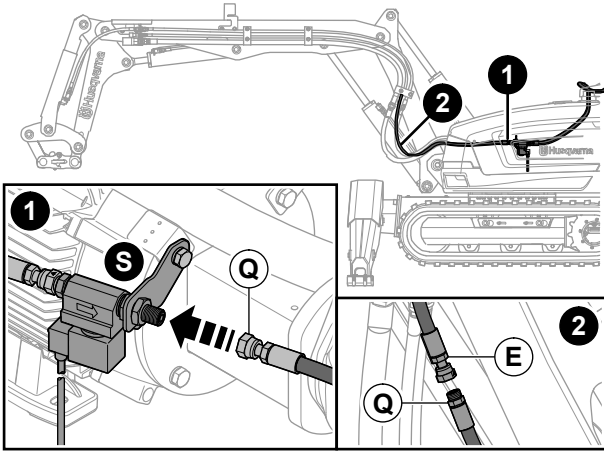
22. Install the pre assembled part S with the bolt that was loosen in step 1 (4).



23. Install the hose Q through the left front cover, the male end of the hose towards the boom.

# 1 DUST REDUCTION

24. Connect hose Q to the pre assembled part S (1) and hose E (2).



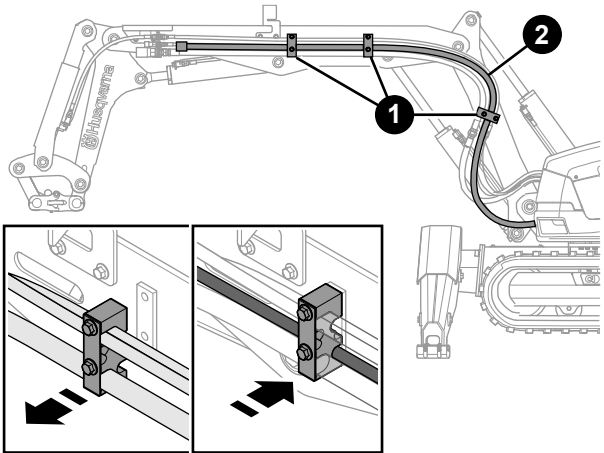
25. Open the fasteners (1), two for DXR250-270, three for DXR300-310.

26. Place the hose (2) in the inner position of the fasteners and loosely close the fasteners (1).

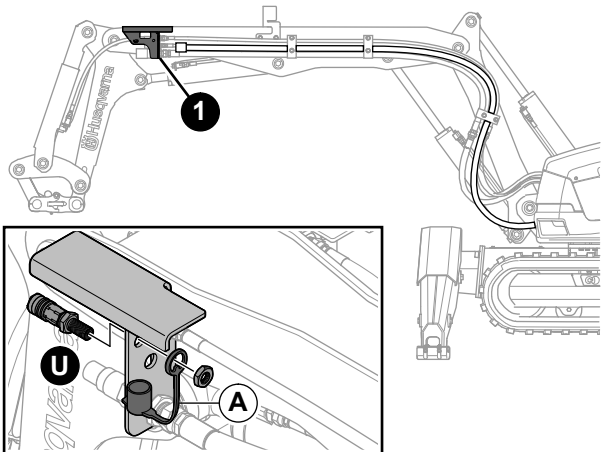


## NOTE!

Be careful not to twist the hoses during installation.



27. Install pre assembled part U + A in the bracket.



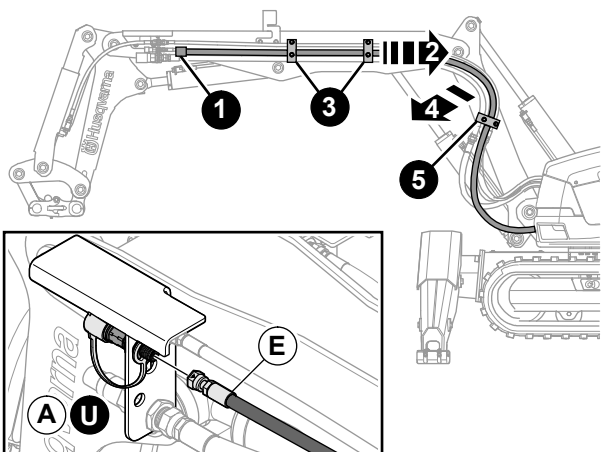
28. Install the hose E to the pre assembled part U (1).

29. Extend the hose E towards the turret (2).

30. Tighten the upper hose fasteners tightly (3), one for DXR250-270, two for DXR300-310.

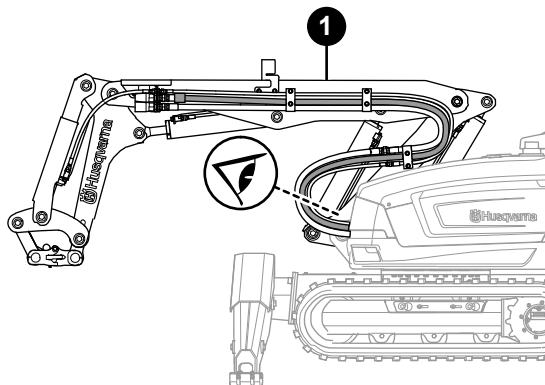
31. Pull the hoses outwards from the machine to prevent wear (4).

32. Tighten the lower hose fastener tightly (5).



# 1 DUST REDUCTION

33. Retract the Boom (1) to the end position and make sure the installation is not in collision.



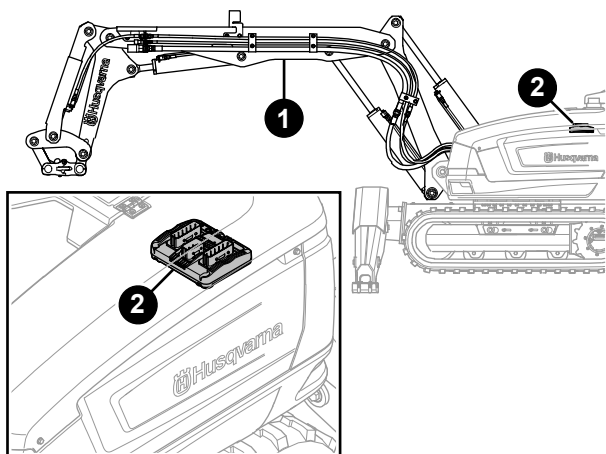
## NOTE!

Refer to the Operator's manual for instructions on how to activate the water function.

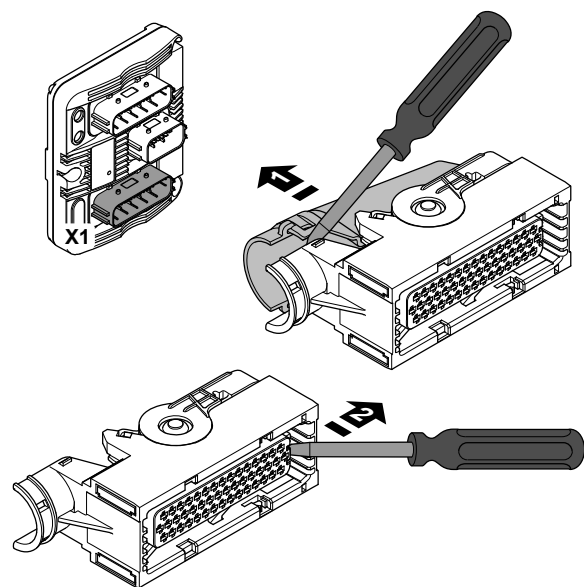
## 1.3 Installation DXR 275/305/315

To position the machine in a safe way before start of maintenance is important to prevent accidents. Always take precautions to reduce the risk of heavy pieces collapsing or tipping due to lack of hydraulic pressure. Make sure that the machine is positioned in such a way that the machine cannot tip and that the Boom-stick is mechanically locked or forming a stable self-carrying structure. Use jack stands to secure the machine and to stop hydraulic parts to sink due to reduced pressure.

### Install DXR 275/305/315



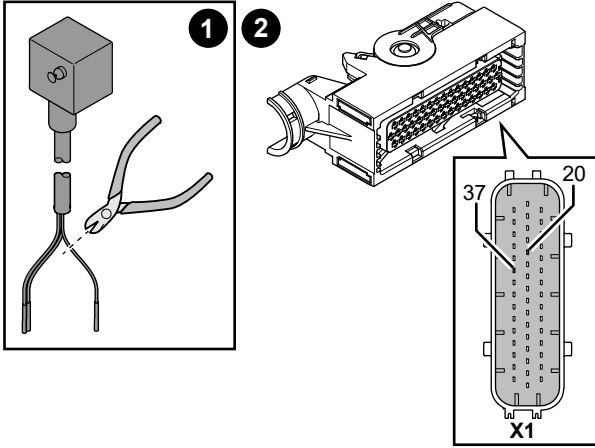
1. Position the machine as illustrated (1).
2. Turn off the machine.
3. Locate the Slave Control Module Tower (KE3) (2).



4. Disconnect the connector X1 from the Slave Control Module Tower (KE3).

Use a small screwdriver, remove the cover (1) and release the tab lock (2).

# 1 DUST REDUCTION



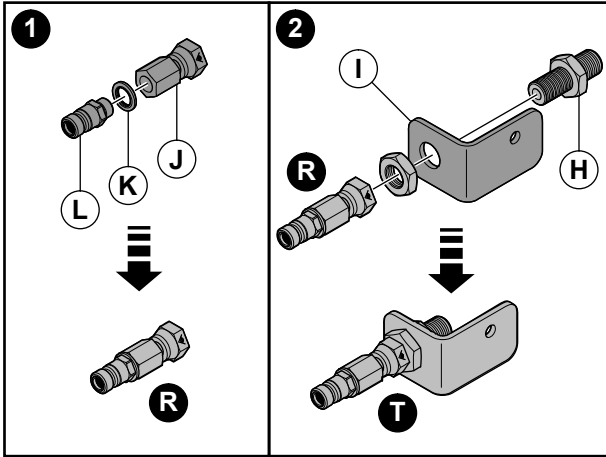
5. Install the cable from the kit, the brown wire in X1 connector slot 20, and the blue wire in connector slot 37 in component Slave Control Module Tower (KE3). (2)

- Push the wire pin into the connector house until a quiet click is felt.
- Pull slightly to make sure that the pin is locked in place.
- Push pack the grid protector properly, the integrated tab lock must be in locked position.

6. Cut the black wire. (1)

7. Install the cover on X1 and connect the connector.

Install the cover on the Slave Control Module Tower (KE3).

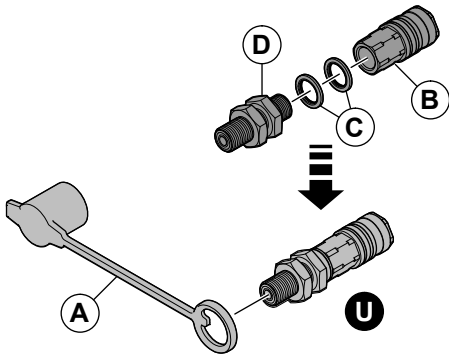


8. Pre assemble J + K + L = R tightly (1).

9. Pre assemble R + I + H = T tightly (2).

10. Pre assemble B + 2 x C + D = U tightly.

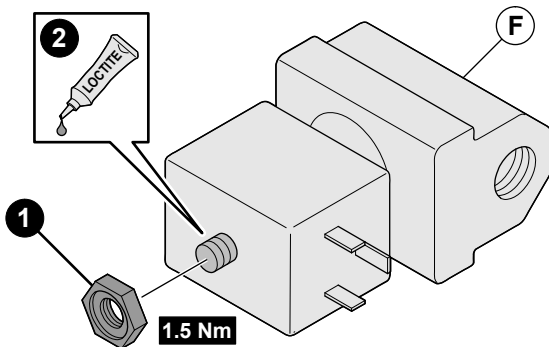
11. Pre assemble U + A.



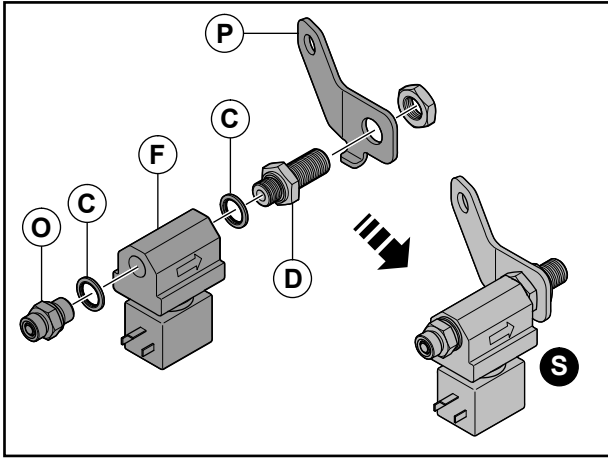
12. Remove the pre assembled nut (1) from part F.

13. Add LOCTITE 243 on the valve threads (2).

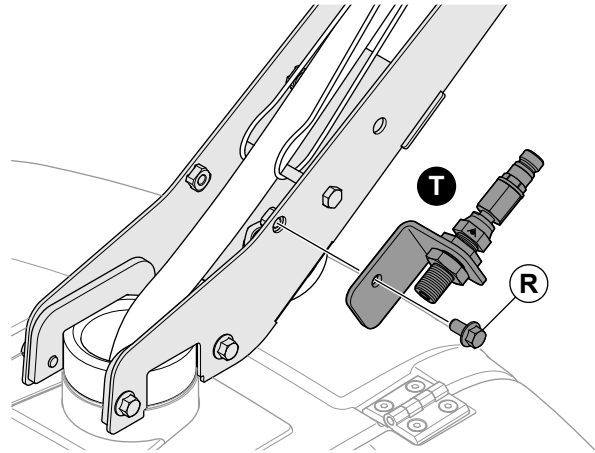
14. Tighten the nut (1) with torque 1.5 Nm



# 1 DUST REDUCTION

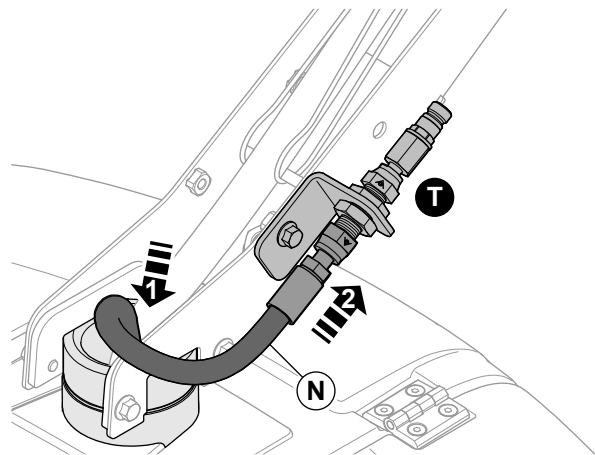


15. Pre assemble P + D + C + F + C + O = S tightly.



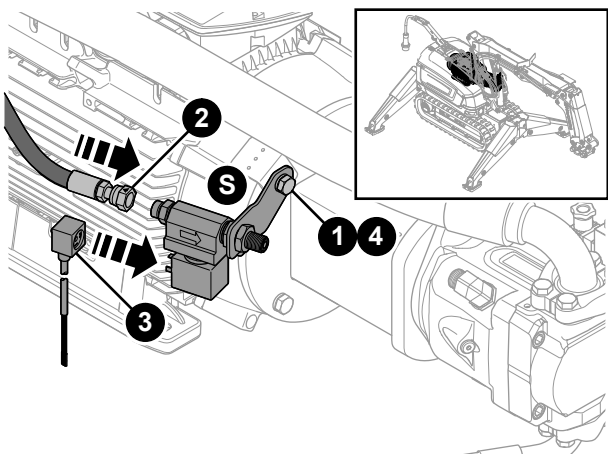
16. Remove the original screw.

17. Install the pre assembled part T with the new screw (R) tightly.



18. Install the hose N.

19. Connect the hose to the pre assembled part T.



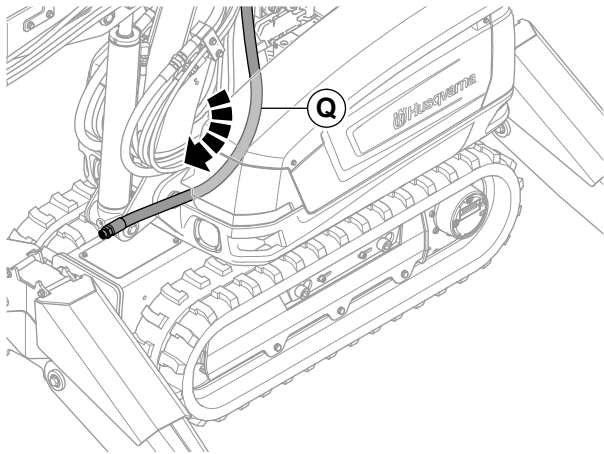
20. Loosen the bolt (1).

21. Install the hose N to the pre assembled part S (2).

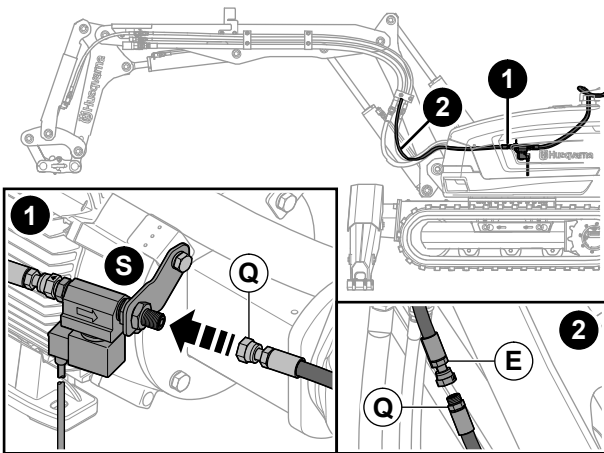
22. Connect the connector to the valve (3) and secure the cable with a strap to the existing wiring harness.

23. Install the pre assembled part S with the bolt that was loosen in step 1 (4).

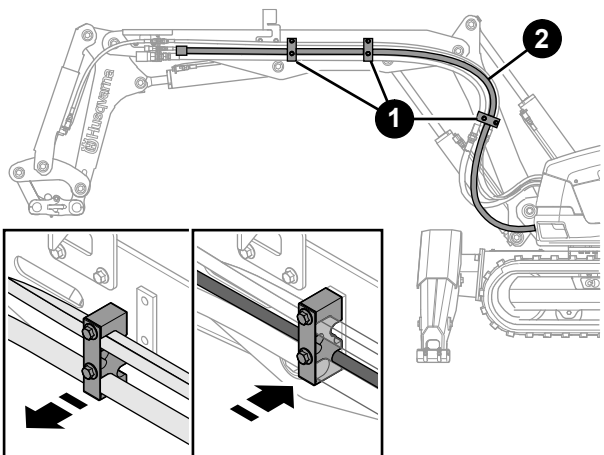
# 1 DUST REDUCTION



24. Install the hose Q through the left front cover, the male end of the hose towards the boom. Pull out as much of the hose as possible.



25. Connect hose Q to the pre assembled part S (1) and hose E (2).



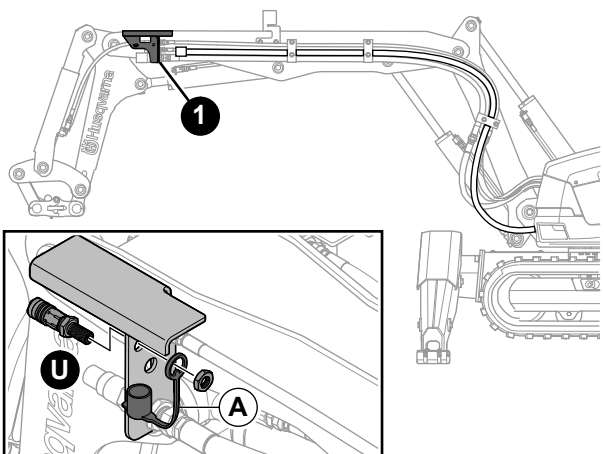
26. Open the fasteners (1), two for DXR275, three for DXR305-315.

27. Place the hose (2) in the inner position of the fasteners and loosely close the fasteners (1).



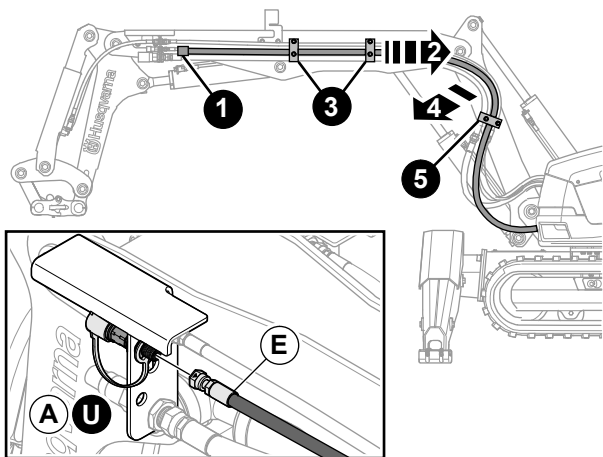
## NOTE!

Be careful not to twist the hoses during installation.



28. Install pre assembled part U + A in the bracket.

# 1 DUST REDUCTION



29. Install the hose E to the pre assembled part U (1).

30. Extend the hose E towards the turret (2).

31. Tighten the upper hose fasteners tightly (3), one for DXR275, two for DXR305-315.

32. Pull the hoses outwards from the machine to prevent wear (4).

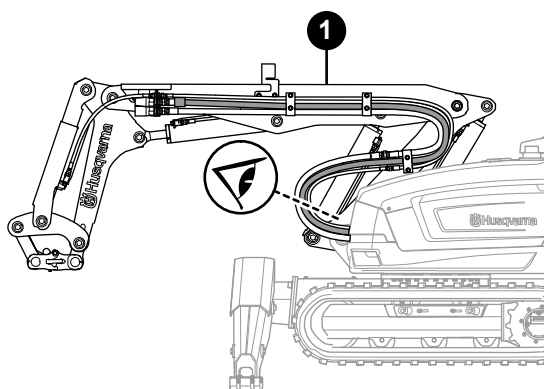
33. Tighten the lower hose fastener tightly (5).

34. Retract the Boom (1) to the end position and make sure the installation is not in collision.



## NOTE!

Refer to the Operator's manual for instructions on how to activate the water function.





[www.husqvarnacp.com](http://www.husqvarnacp.com)