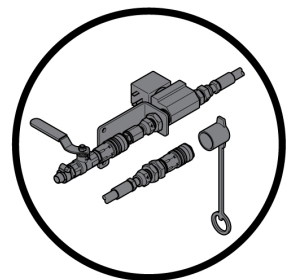


 **Husqvarna**



Accessory Assembly Instruction
Dust Reduction
DXR 140 | 145



HUSQVARNA CONSTRUCTION PRODUCTS

Husqvarna part no.
114 29 03-26 Rev. B

1	Dust Reduction	1
1.1	Ingoing Parts	1
1.2	Installation DXR 140	2
1.3	Installation DXR 145	6

1 DUST REDUCTION

1.1 Ingoing Parts

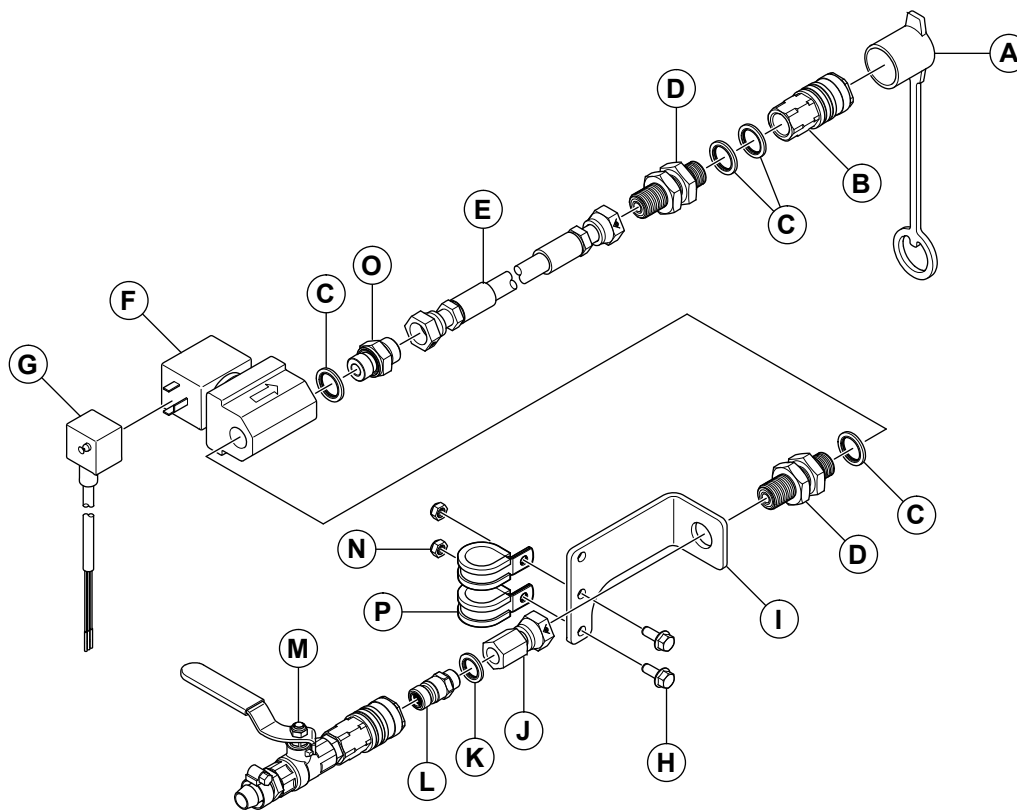


Table 1. Ingoing Parts in Dust Reduction Kit 536 11 20-01 (DXR140/145)

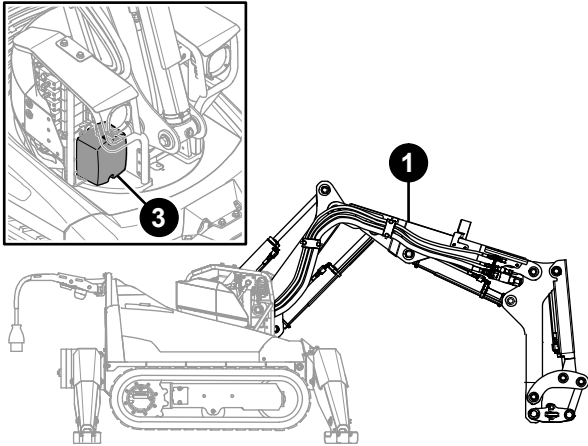
Pcs	Part	Name
1	A	Dust cover
1	B	Hydraulic coupling
4	C	Washer 3/8"
2	D	Adapter
1	E	Hose assy, L = 1690 mm
1	F	Valve, water control
1	G	Cable with round pin (DXR140)
1	G	Cable with square pin (DXR145)
2	H	Screw
1	I	Bracket
1	J	Adapter
1	K	Washer 1/4"
1	L	Nipple
1	M	Valve assy
2	N	Lock nut
1	O	Adapter
2	P	Hose clamp

1 DUST REDUCTION

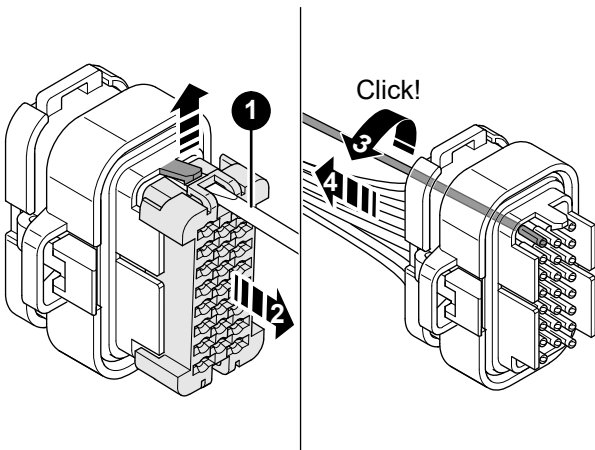
1.2 Installation DXR 140

To position the machine in a safe way before start of maintenance is important to prevent accidents. Always take precautions to reduce the risk of heavy pieces collapsing or tipping due to lack of hydraulic pressure. Make sure that the machine is positioned in such a way that the machine cannot tip and that the Boom-stick is mechanically locked or forming a stable self-carrying structure. Use jack stands to secure the machine and to stop hydraulic parts to sink due to reduced pressure.

Install DXR 140



1. Position the machine as illustrated (1).
2. Turn off the machine.
3. Remove the Slave Control Module (K23) cover (3).



4. Disconnect the connectors XM2 and XM3 from the Slave Control Module (K23).



NOTE!

If the machine is an older version you have to move the current wire in connector XM2 slot 16 to connector XM1 slot 23.

Remove of a wire:

- Release the tab lock (1) on the side of the connector grid and slide the grid (2) to the next stop.
- Disengage the cable pin by gently twisting the wire (3) until a quiet click is heard.
- Pull out the cable (4) from the connector house.

Install of a wire: Refer to paragraph 6 for instructions.

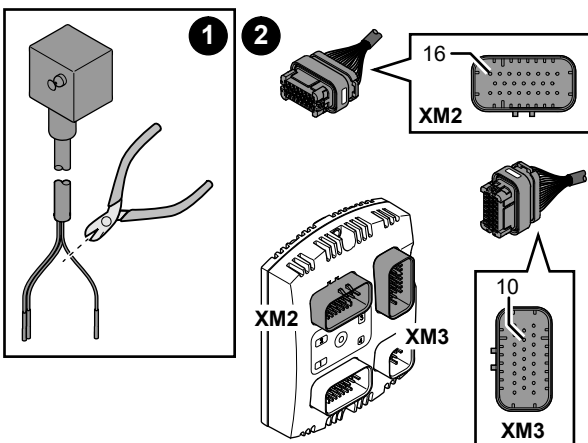
5. Cut the black wire. (1)

6. Install the blue wire in XM2 connector slot 16, and the brown wire in XM3 connector slot 10 in component K23 (Slave Control Module). (2)

- Push in the cable pin into the connector house until a quiet click is heard.
- Push back the grid protector properly, the tab lock (1) must be locked in position.

7. Connect XM2 and XM3.

Install the cover on the Slave Control Module.

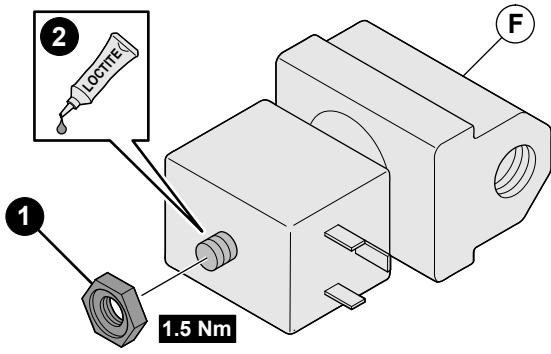


1 DUST REDUCTION

8. Remove the pre assembled nut (1) from part F.

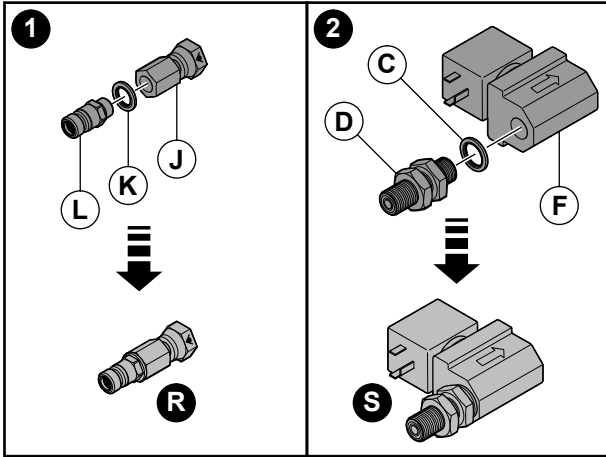
9. Add LOCTITE 243 on the valve threads (2).

10. Tighten the nut (1) with torque 1.5 Nm.

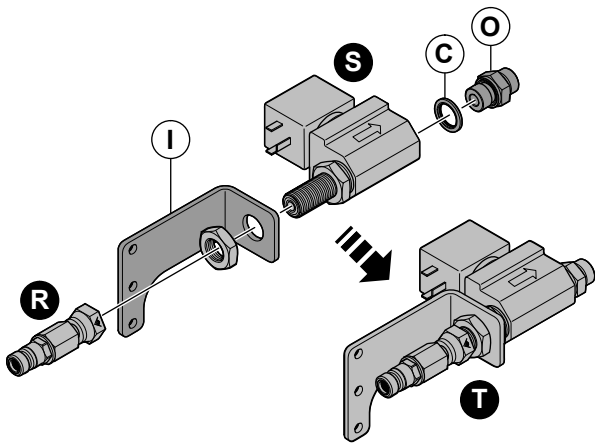


11. Pre assemble J + K + L = R tightly.

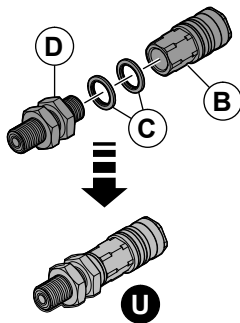
12. Pre assemble F + C + D = S tightly.



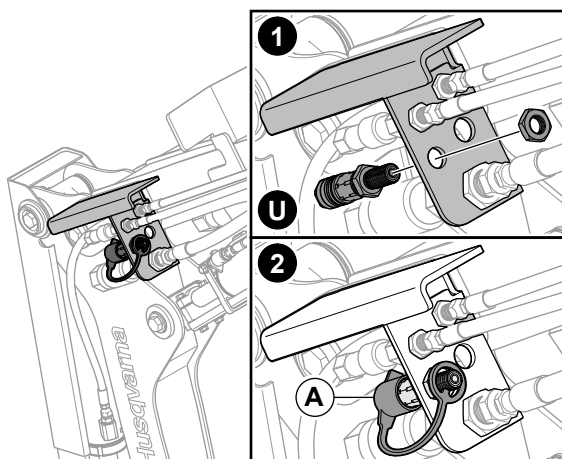
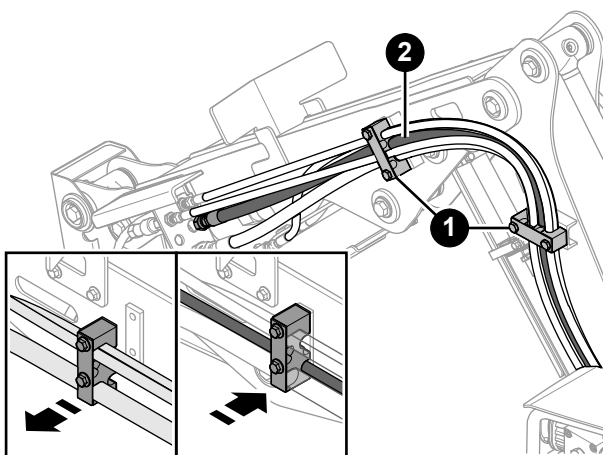
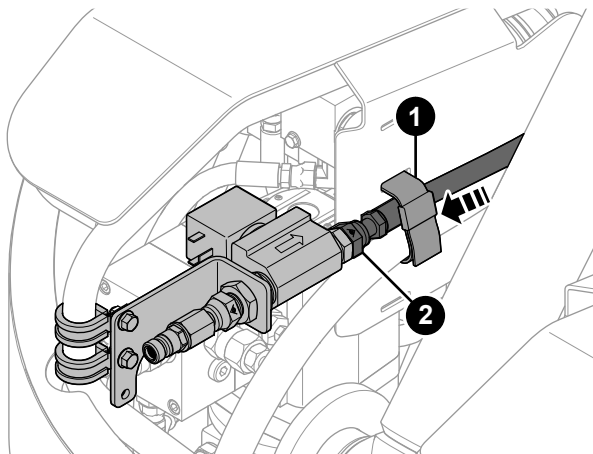
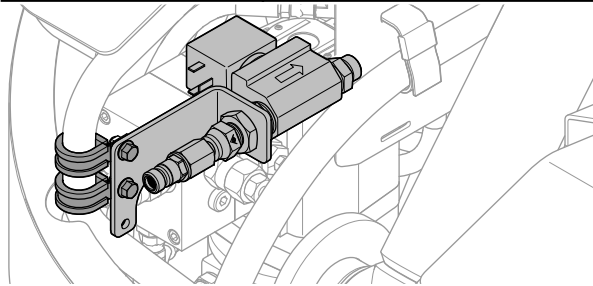
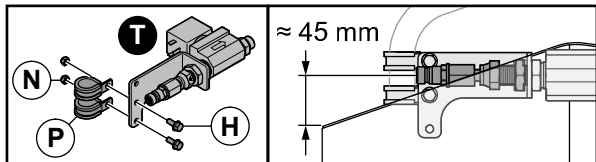
13. Pre assemble O + C + S + I + R = T tightly.



14. Pre assemble B + 2 x C + D = U tightly.



1 DUST REDUCTION



15. Install T with the two hoseclamps.

16. Adjust the placement of the bracket to the rear cover (≈ 45 mm).

17. Loosen the fabric strap (1).

18. Install the hose (2) and tighten the fabric strap around the hose.

19. Open the two hose fasteners (1).

20. Place the hose in the inner position of the fastener and loosely close the fastener.



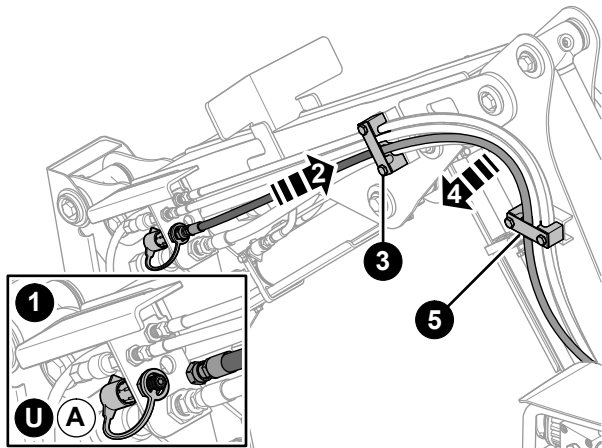
NOTE!

Be careful not to twist the hoses during installation.

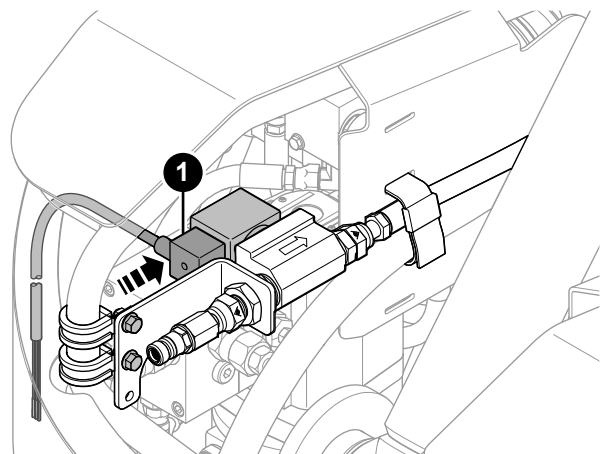
21. Install the pre assembled part U tightly in the bracket (1).

22. Install the part A (2).

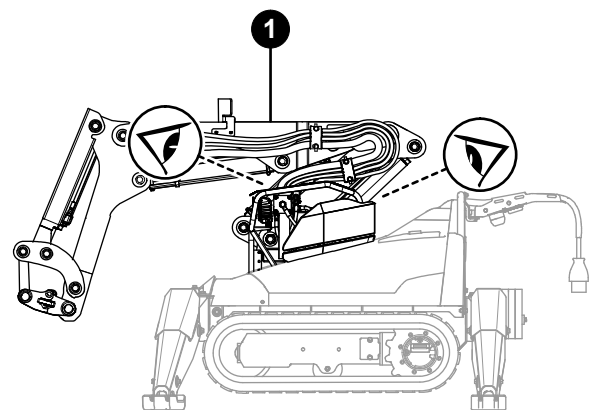
1 DUST REDUCTION



23. Install the hose to the pre assembled part U (1).
24. Extend the hose towards the turret (2).
25. Tighten the upper hose fastener tightly (3).
26. Pull the hoses outwards from the machine to prevent wear (4).
27. Tighten the lower hose fastener tightly (5).



28. Connect the connector to the valve (1) and secure the cable with a strap to the existing wiring harness.



29. Retract the boom to the end position and make sure the installation is not in collision (1).



NOTE!

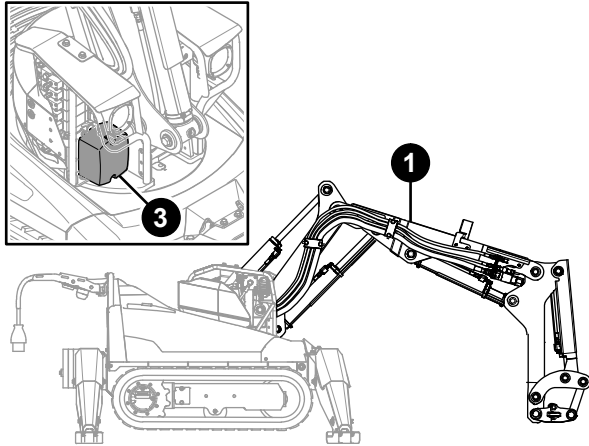
Refer to the Operator's manual for instructions on how to activate the water function.

1 DUST REDUCTION

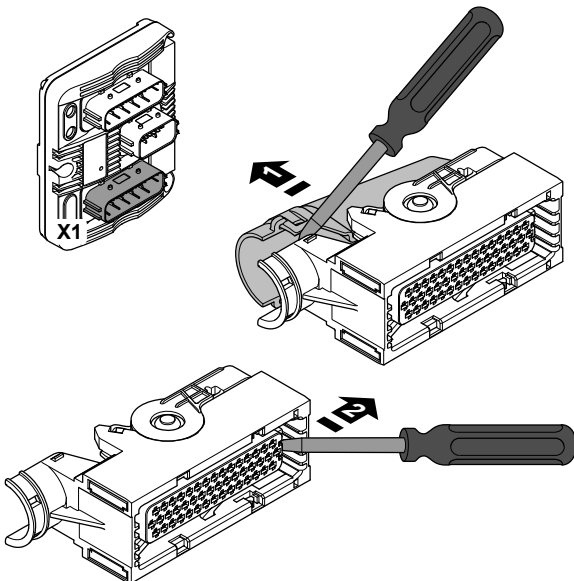
1.3 Installation DXR 145

To position the machine in a safe way before start of maintenance is important to prevent accidents. Always take precautions to reduce the risk of heavy pieces collapsing or tipping due to lack of hydraulic pressure. Make sure that the machine is positioned in such a way that the machine cannot tip and that the Boom-stick is mechanically locked or forming a stable self-carrying structure. Use jack stands to secure the machine and to stop hydraulic parts to sink due to reduced pressure.

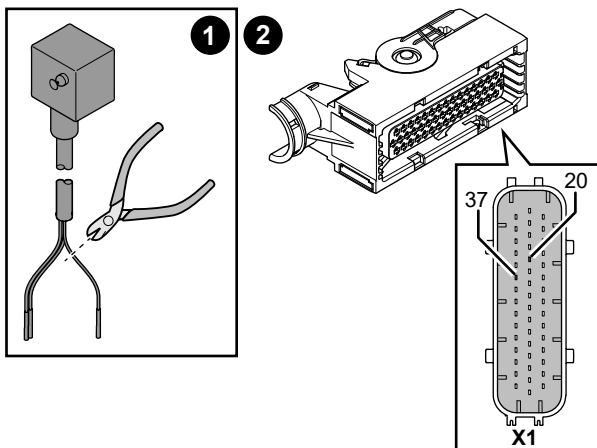
Install DXR 145



1. Position the machine as illustrated (1).
2. Turn off the machine.
3. Remove the Slave Control Module Tower (KE3) cover (3).



4. Disconnect the connector X1 from the Slave Control Module Tower (KE3).
Use a small screwdriver, remove the cover (1) and release the tab lock (2).



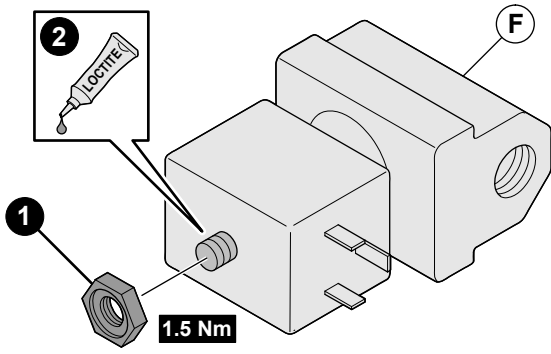
5. Install the the cable from the kit, the brown wire in X1 connector slot 20, and the blue wire in connector slot 37 in component Slave Control Module Tower (KE3). (2)
 - Push the wire pin into the connector house until a quiet click is felt.
 - Pull slightly to make sure that the pin is locked in place.
 - Push pack the grid protector properly, the integrated tab lock must be in locked position.
6. Cut the black wire. (1)
7. Install the cover on X1 and connect the connector.
Install the cover on the Slave Control Module Tower (KE3).

1 DUST REDUCTION

8. Remove the pre assembled nut (1) from part F.

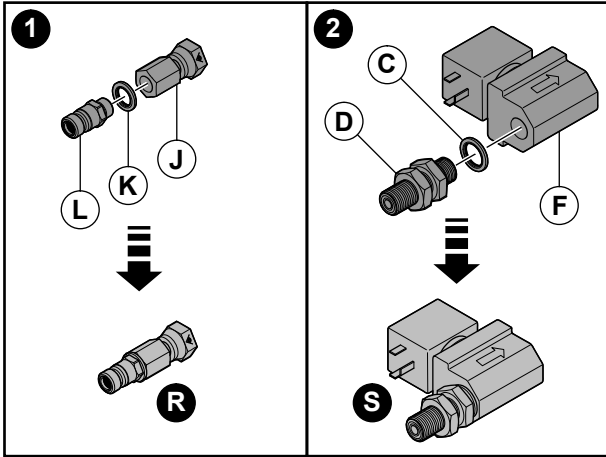
9. Add LOCTITE 243 on the valve threads (2).

10. Tighten the nut (1) with torque 1.5 Nm.

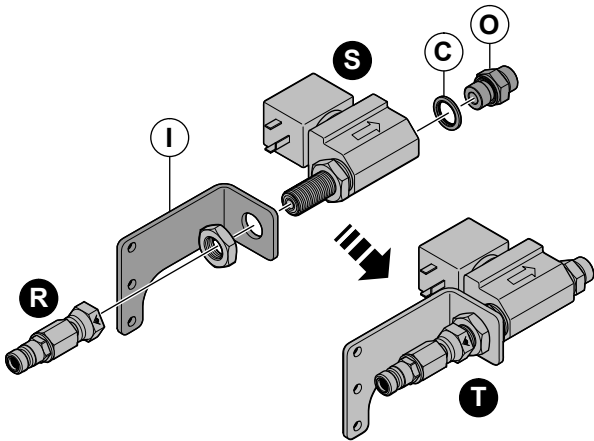


11. Pre assemble J + K + L = R tightly (1).

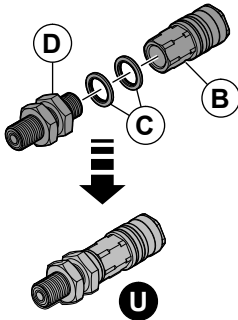
12. Pre assemble F + C + D = S tightly (2).



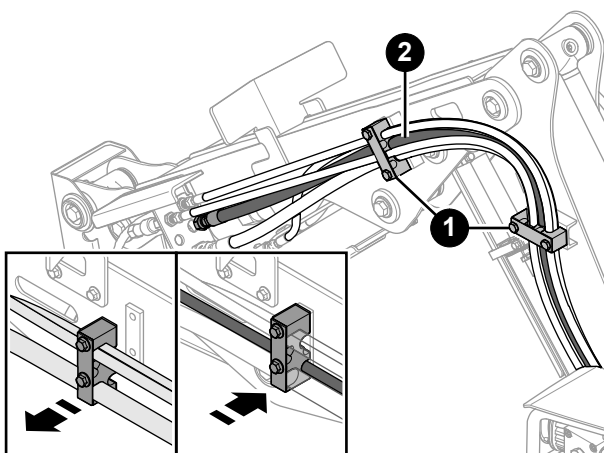
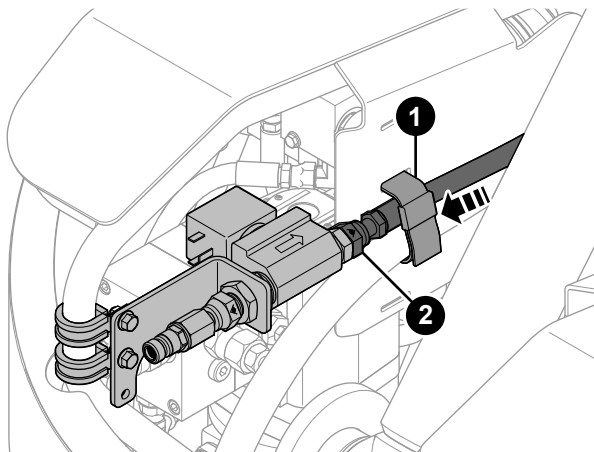
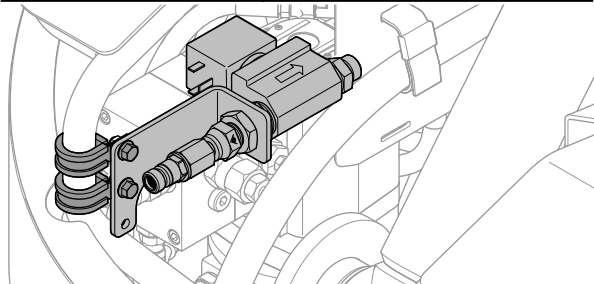
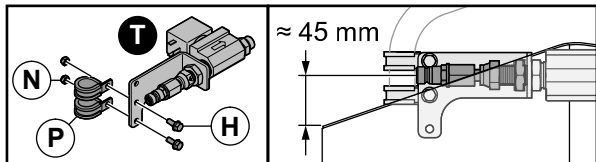
13. Pre assemble O + C + S + I + R = T tightly.



14. Pre assemble B + 2 x C + D = U tightly.



1 DUST REDUCTION



15. Install T with the two hose clamps.

16. Adjust the placement of the bracket to the rear cover (≈ 45 mm).

17. Loosen the fabric strap (1).

18. Install the hose (2) and tighten the fabric strap around the hose.

19. Open the two hose fasteners (1).

20. Place the hose in the inner position of the fastener and loosely close the fastener.

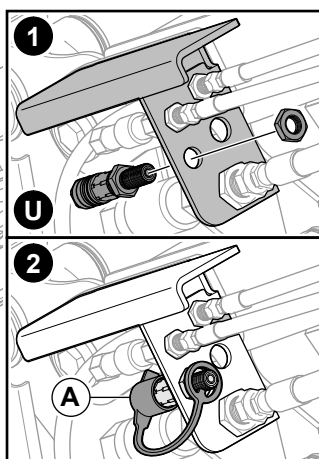


NOTE!

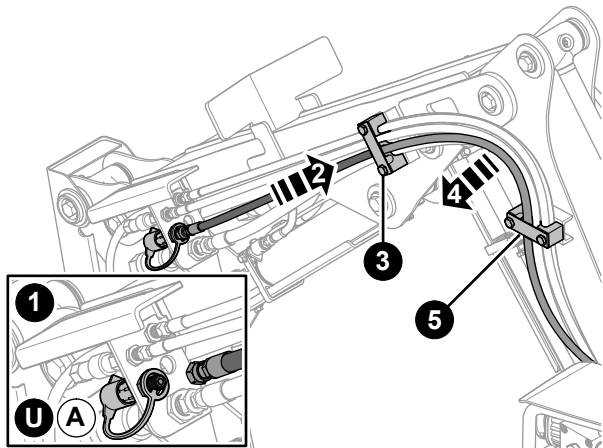
Be careful not to twist the hoses during installation.

21. Install the pre assembled part U tightly in the bracket (1).

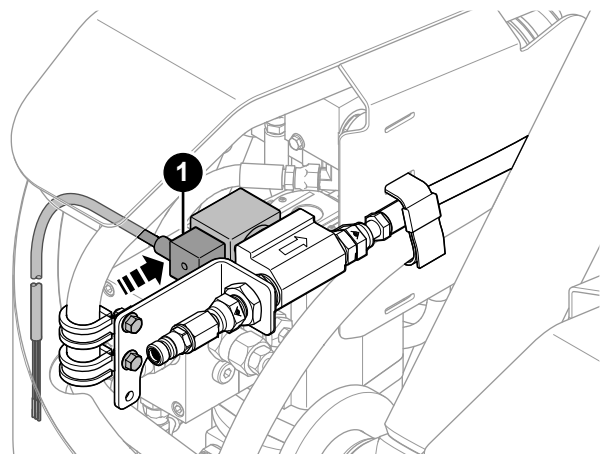
22. Install the part A (2).



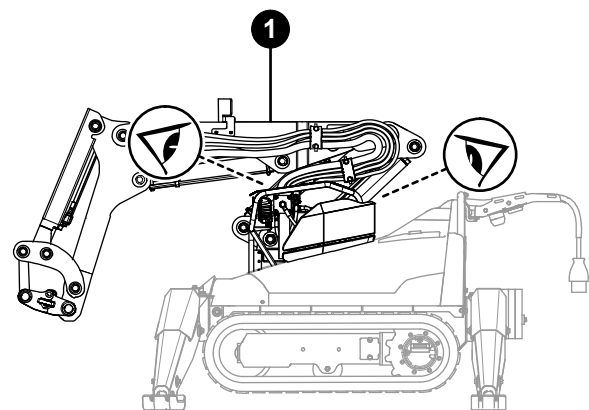
1 DUST REDUCTION



23. Install the hose to the pre assembled part U (1).
24. Extend the hose towards the turret (2).
25. Tighten the upper hose fastener tightly (3).
26. Pull the hoses outwards from the machine to prevent wear (4).
27. Tighten the lower hose fastener tightly (5).



28. Connect the connector to the valve (1) and secure the cable with a strap to the existing wiring harness.



29. Retract the boom to the end position and make sure the installation is not in collision (1).



NOTE!

Refer to the Operator's manual for instructions on how to activate the water function.



www.husqvarnacp.com